

INVITED JUDGES

Mr A Stevens,
Mr.C Pannell,
Mr.D Nice,

Mr.C Cheswright,
Mr. D Durrant
Mr.K Cocker,

(Provisional)

SHOW SECRETARY – Dave Tait

Postal Entries: 26 Fernhurst Road, Southsea,
Portsmouth, Hants, PO4 8AA

Email: fishy.mad@hotmail.co.uk

Telephone Entries: **02392 863774**

SHOW MANAGER – Rod Isted

Telephone: **01243 572762**
07726 840627

We would like to thank all our sponsors for the help we have
been given with the Show:

Tetra, Fluval
Healthy Koi Ltd, Arundel Aviaries,
Emsworth Aquaria
Maidenhead Aquatics



Maidenhead Aquatics @ Havant

Havant Garden Centre, Wyevale Country Gardens
Bartons Road, Havant, HAMPSHIRE, PO9 5NA

Tel 023 9249 8401 Fax 023 9249 8402

EMSWORTH AQUARIA & REPTILES

For all your fishkeeping needs - Visit us for a large selection of

TROPICAL - COLDWATER AND POND FISH

PLUS A GOOD SELECTION OF DRY GOODS

WE ALSO CARRY A WIDE SELECTION OF REPTILES & EQUIPMENT

242-244, Havant Road, Drayton, Portsmouth, Hampshire, PO6 1PA

Tel: 023 9220 0990

PORTSMOUTH'S OLDEST ESTABLISHED AQUARIUM SHOP

ARUNDEL AVIARIES & FISHERIES

313-315 Arundel Street, Portsmouth, PO1 1NJ

023 9282 0047

**OVER 200 TANKS OF TROPICAL
COLD WATER AND MARINES**

All Tanks Individually Filtered

LIST OF CLASSES

RULES

- 1 The Show will be run in accordance with the FBAS show rules.
- 2 The health and wellbeing of the fish at the Show are paramount.
- 3 Gravel is NOT allowed except in class Z
- 4 All pre-booked entries (before 5pm on Saturday 31st May) are 40p. Entries received after this or on Show day are 50p each, No further charges per exhibitor after 10 entries (ie Max cost £4.00 or £5.00)
- 5 All breeders classes to consist of FOUR fish, no more than 14 months old on the day of the Show.
- 6 The organisers will not be held responsible for any problems, loss or damage to an exhibit for whatever the cause.
- 7 Water – The use of local water is entirely at the risk of the exhibitor, and water quality is the responsibility of the exhibitor. It is strongly advised that exhibitors bring sufficient suitable water with them,
- 8 De-benching will only be permitted at the discretion of the organiser.
- 9 Benching from 10.00am – 12.00am. Judging will commence at 12.30 prompt.
- 10 DEFRA Listed Species – It is assumed by the organisers that owners of entries which require a DEFRA licence hold such a licence.

AWARDS

ALL 1st PLACES	Card & Prize if available
ALL 2nd, 3rd & 4th	Card
BEST FISH IN SHOW	Trophy, Certificate & Prize
2x RESERVE BEST IN SHOW	Certificate & Prize
CHAMPIONSHIP CLASSES	Championship Trophy & Pin

- B BARBS
- C CHARACINS (Other than Ca & Cb)
- Ca CHARACINS (As current FBAS size sheet)
- Cb CHARACINS (Pencilfish etc.)
(FBAS DIAMOND CLASS)
- D CICHLIDS (Other than Da, Db & Dc) **(FBAS CHAMP.CLASS)**
- Da ANGELFISH (Pterophyllum)
- Db DWARF CICHLIDS (As current FBAS size sheet)
- Dc RIFT VALLEY CICHLIDS
- E LABYRINTH FISH
- Ea FIGHTERS (Betta Splendens)
- F EGGLAYING TOOTH CARPS (KILLIFISH)
- G CATFISH
- H CORYDORAS
- Ha ASPIDORAS & BROCHIS
- J RASBORAS
- K DANIOS
- L LOACHES (Other than La)
- La BOTIAS
- M AOV TROPICAL EGGLAYER
- Nb-m SEXED PAIRS (Tropical Egglayers)
- No-t SEXED PAIRS (Tropical Livebearers)
- Oa-q MALE GUPPY
- Os-y FEMALE GUPPY
- P CULTIVATED LIVEBEARERS (Other than Oa-q & Os-y)
- Q XIPHOPHORUS (Swordtails)
- R XIPHOPHORUS (Platties) **(FBAS CHAMPIONSHIP CLASS)**
- S POECILLIA & LIMIA (Other than Oa & Ob)
- T AOV TROPICAL LIVEBEARER
- U SINGLE TAIL GOLDFISH
- V TWIN TAIL GOLDFISH
- W AOV COLDWATER FISH & WHITE CLOUD MOUNTAIN MINNOWS
- Xb-m BREEDERS TROPICAL EGGLAYER **(4 fish per class)**
- Xo-t BREEDERS TROPICAL LIVEBEARER **(4 fish per class)**

HEALTHY Koi The Koi Health Specialists

We are full time Koi Health professionals with years of experience in Koi and fish health matters

Our Services Include:
Pondside Treatments
Water Analysis & Reports
Koi Health Courses
Fish Moving

We also supply a large range of professional and hobbyist equipment for Koi and fish ponds



TEL: 01243 572762

Or visit our website

If you have a Koi or fish pond and need advice or help give us a call

www.HealthyKoi.co.uk

PROGRAMME

Portsmouth AS Open Show 2015

10.00 to 12.00	Benching
10.00 onwards	Hot drinks available
10.30 onwards	Food available
11:30 – 12:30	Public Viewing
12.30	Judging Commences
15:00 (approx)	Judges Lunches
16.30 (approx)	Awards
17.00	Raffle
17.15	De-benching

There will be a fish sales stand available throughout the day for anyone who wishes to sell live or dry goods and a range of trade stands.

FLUVAL EDGE

ADD DESIGN TO YOUR LIFESTYLE



Fluval EDGE brings an exciting new look to aquatics, combining the most modern aquarium design with the beauty of nature. The result is an utterly stylish complement to any home or office space.



360° Viewing

Glass top for spectacular views from all angles and less evaporation for reduced maintenance



Clear Healthy Water

Easy to use cascading flow filter with 3 stage filtration for a healthy, oxygenated environment



Clean Lines

The filter and retractable lighting modules are hidden from view for a clean, modern look



For more information visit www.hagen.com



Created by experts to bring out the best in your fish



Superior to flakes

Excellent fish condition

Two formulas in one

Better water quality

Fish prefer Crisps!

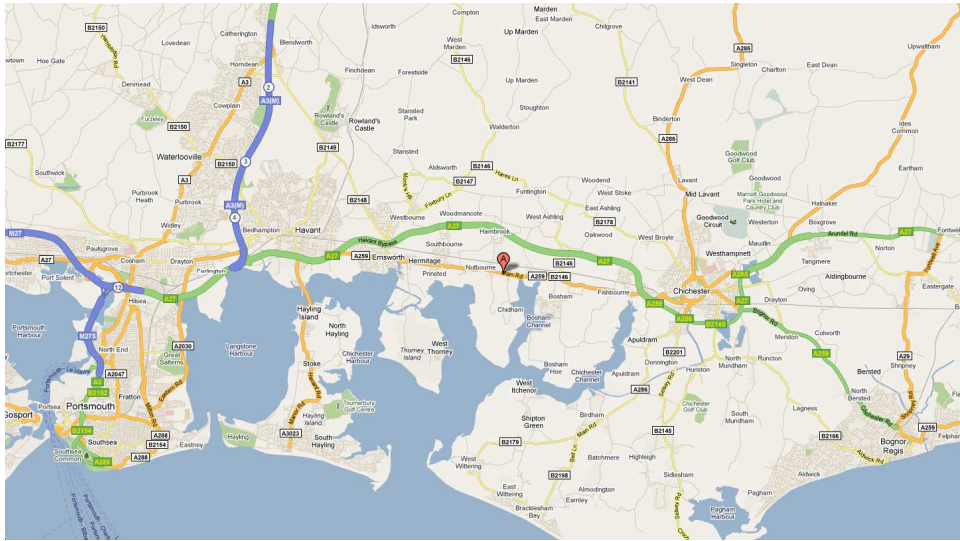


The health and condition of your fish directly depends on the diet you choose for them. That's why Tetra's industry-leading research laboratories developed TetraPro Crisps, to overcome the drawbacks of flake foods. Produced at a lower temperature, and using a completely different production process, TetraPro offers better nutrition for unrivalled health and condition. It also results in less waste production, for improved water quality and clarity. The two-colour process used to make TetraPro also allows the introduction of two formulas into one food, for concentrated benefits on top of a complete, balanced diet. What's more, fish prefer Crisps to flakes, meaning they get a diet they love, as well as one that keeps them in great shape.



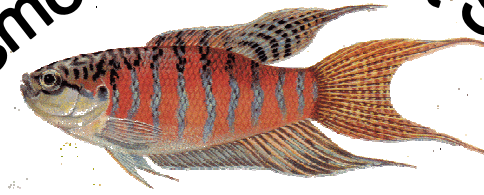
For more information: www.tetra.net

Map



Chidham Village Hall
Main Road, Chidham, Nr Chichester,
West Sussex, PO18 8TP

Portsmouth Aquarist Society



Affiliated to: Federation of British Aquatic Societies
Member of: Association of Southern Aquarists Societies

OPEN SHOW 2015

Saturday 4th July

FBAS Championship Classes
Classes D(Cichlids) and R (Platties)

Diamond Class

CLASS Cb (Characins – Pencilfish etc)

Chidham & Hambrook Village Hall
Main Road, Chidham, Nr. Chichester, PO18 8TP