

# Map



**St Nicholas Church,**  
Belmont Grove, Bedhampton,  
Havant PO9 3PU

Affiliated to: Federation of British Aquatic Societies  
Member of: Association of Southern Aquarists Societies



# OPEN SHOW 2023

**Saturday 19th August**

**POST PANDEMIC TROPHY**

**Characins**

**(Best of C Class, inc. Ca & Cb)**

**St Nicholas Church, Belmont Grove**  
Bedhampton, Havant PO9 3PU

## INVITED JUDGES

**Mr. A Stevens**  
**Mr. L Pearce**  
**Ms. D Pearce**

**Mr. C Cheswright**  
**Mr. K Cocker**  
**Mr. A Finnegan**

## SHOW SECRETARY – Dave Tait

Postal Entries: 26 Fernhurst Road, Southsea,  
Portsmouth, Hants, PO4 8AA

Email: davidtait10@yahoo.co.uk

Telephone Entries: **023 92 863774**

## SHOW MANAGER – Graham Allen

Telephone: **07968 959764**

We would like to thank all our sponsors for the help  
we have been given with the Show:

**Tetra, Fluval**  
**Aquatic Reptile Superstore, Healthy Koi Ltd,**  
**Arundel Aviaries, Emsworth Aquaria,**  
**Kew Aquatics, Maidenhead Aquatics**



**Maidenhead Aquatics @ Havant**  
Havant Garden Centre, Wyevale Country Gardens  
Bartons Road, Havant, HAMPSHIRE, PO9 5NA  
Tel **023 9249 8401** Fax **023 9249 8402**

PORTSMOUTH'S OLDEST ESTABLISHED AQUARIUM SHOP

**ARUNDEL AVIARIES  
& FISHERIES**

313-315 Arundel Street, Portsmouth, PO1 1NJ

**023 9282 0047**

**OVER 200 TANKS OF TROPICAL  
COLD WATER AND MARINES**

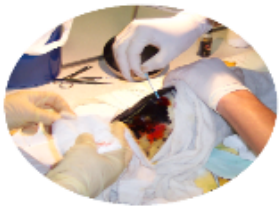
All Tanks Individually Filtered

# HEALTHY Koi The Koi Health Specialists

We are full time Koi Health professionals with years of experience in Koi and fish health matters

## Our Services Include:

Pondside Treatments  
Water Analysis & Reports  
Koi Health Courses  
Fish Moving



We also supply a large range of professional and hobbyist equipment for Koi and fish ponds



**TEL: 01243 572762**

**Or visit our website**

If you have a Koi or fish pond and need advice or help give us a call

**[www.HealthyKoi.co.uk](http://www.HealthyKoi.co.uk)**

## PROGRAMME

### Portsmouth AS Open Show 2023

9:30 to 12:00	Benching
10:00 onwards	Hot drinks available
10:30 onwards	Food available
11:00 – 12:00	Public Viewing
12:00	Judging Commences
13:30	Talk – TBC
15:00 (approx)	Judges Lunches
15:15	De-benching
16:00 (approx)	Awards
16.30 (approx)	Raffle

There will be a fish sales stand available throughout the day for anyone who wishes to sell live or dry goods and a trade stand.

## LIST OF CLASSES

### RULES

- 1 The Show will be run in accordance with the FBAS show rules.
- 2 The health and wellbeing of the fish at the Show are paramount.
- 3 Gravel is NOT allowed except in class Z
- 4 All pre-booked entries (before 5pm on Friday 18th August) are 40p. Entries received after this or on Show day are 50p each, No further charges per exhibitor after 10 entries (ie Max cost £4.00 or £5.00)
- 5 All breeders classes to consist of FOUR fish, no more than 14 months old on the day of the Show.
- 6 The organisers will not be held responsible for any problems, loss or damage to an exhibit for whatever the cause.
- 7 Water – The use of local water is entirely at the risk of the exhibitor, and water quality is the responsibility of the exhibitor. It is strongly advised that exhibitors bring sufficient suitable water with them,
- 8 De-benching will only be permitted at the discretion of the organiser.
- 9 Benching from 10.00am – 12.00am. Judging will commence at 12.00 prompt.
- 10 DEFRA Listed Species – It is assumed by the organisers that owners of entries which require a DEFRA licence hold such a licence.

### AWARDS

<b>ALL 1<sup>st</sup> PLACES</b>	Card & Prize if available
<b>ALL 2<sup>nd</sup>, 3<sup>rd</sup> &amp; 4<sup>th</sup></b>	Card
<b>BEST FISH IN SHOW</b>	Certificate & Prize
<b>2x RESERVE BEST IN SHOW</b>	Certificate & Prize
<b>POST PANDEMIC TROPHY</b>	Certificate & Prize

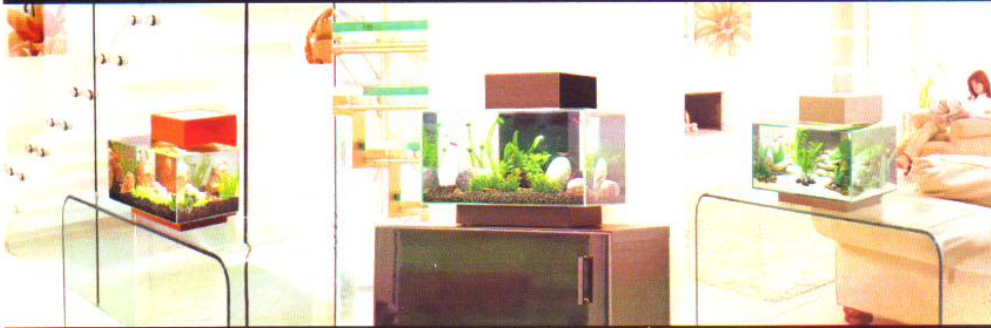
The Post Pandemic Trophy is awarded to the best fish out of the whole C Class, including C, Ca, Cb.

B	BARBS
C	<b>CHARACINS (Other than Ca &amp; Cb) Post Pandemic Trophy</b>
Ca	<b>CHARACINS (As current FBAS size sheet) Post Pandemic Trophy</b>
Cb	<b>CHARACINS (Pencilfish etc.) Post Pandemic Trophy</b>
D	CICHLIDS (Other than Da, Db & Dc)
Da	ANGELFISH (Pterophyllum)
Db	DWARF CICHLIDS (per FBAS size sheet)
Dc	RIFT VALLEY CICHLIDS
E	LABYRINTH FISH
F	EGGLAYING TOOTH CARPS (KILLIFISH)
G	CATFISH
H	CORYDORAS
Ha	ASPIDORAS & BROCHIS
I	FIGHTERS (Betta Splendens)
J	RASBORAS
K	DANIOS
L	LOACHES (Other than La)
La	BOTIAS
M	AOV TROPICAL EGGLAYER other than Ma, Mc
Ma	BALANTIOCHEILOS, CROSSOCHEILUS, LABEO,
Mc	RAINBOW FISH
Nb-m	SEXED PAIRS (Tropical Egglayers)
No-t	SEXED PAIRS (Tropical Livebearers)
Oa-q	MALE GUPPY
Os-y	FEMALE GUPPY
P	CULTIVATED LIVEBEARERS (Other than Oa-q & Os-y)
Q	XIPHOPHORUS (Swordtails)
R	XIPHOPHORUS (Platties)
S	POECILLIA & LIMIA (Other than Oa & Ob)
T	AOV TROPICAL LIVEBEARER
Ta	GOODIEDS
U	SINGLE TAIL GOLDFISH
V	TWIN TAIL GOLDFISH
W	AOV COLDWATER FISH & WHITE CLOUD MOUNTAIN MINNOWS
Xb-m	BREEDERS TROPICAL EGGLAYER (4 fish per class)
Xo-t	BREEDERS TROPICAL LIVEBEARER (4 fish per class)



# FLUVAL EDGE

ADD DESIGN TO YOUR LIFESTYLE



Fluval EDGE brings an exciting new look to aquatics, combining the most modern aquarium design with the beauty of nature. The result is an utterly stylish complement to any home or office space.



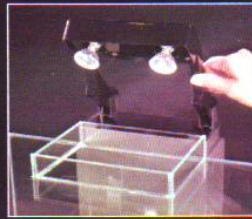
### 360° Viewing

Glass top for spectacular views from all angles and less evaporation for reduced maintenance



### Clear Healthy Water

Easy to use cascading flow filter with 3 stage filtration for a healthy, oxygenated environment



### Clean Lines

The filter and retractable lighting modules are hidden from view for a clean, modern look



For more information visit [www.hagen.com](http://www.hagen.com)



Created by experts to bring out the best in your fish



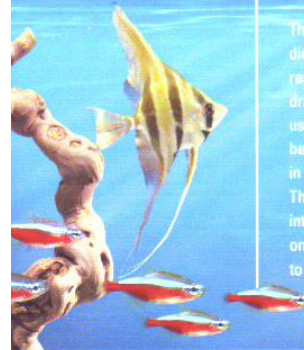
Superior to flakes

Excellent fish condition

Two formulas in one

Better water quality

Fish prefer Crisps!



The health and condition of your fish directly depends on the diet you choose for them. That's why Tetra's industry-leading research laboratories developed TetraPro Crisps, to overcome the drawbacks of flake foods. Produced at a lower temperature, and using a completely different production process, TetraPro offers better nutrition for unrivalled health and condition. It also results in less waste production, for improved water quality and clarity. The two-colour process used to make TetraPro also allows the introduction of two formulas into one food, for concentrated benefits on top of a complete, balanced diet. What's more, fish prefer Crisps to flakes, meaning they get a diet they love, as well as one that keeps them in great shape.



For more information: [www.tetra.net](http://www.tetra.net)